



YH1322 Series OXO

10 MHz – 120 MHz
(Rev E)

GREENRAY INDUSTRIES, INC.

PRECISION QUARTZ TECHNOLOGY

SPECIFICATIONS

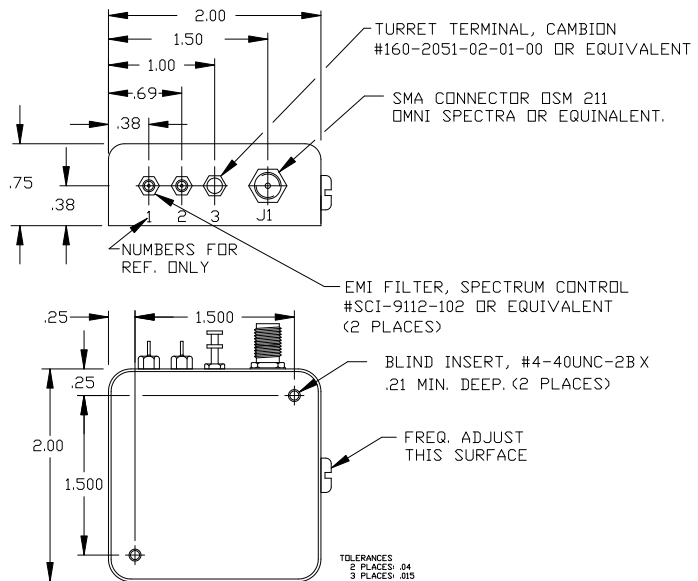
Very Low Phase Noise
Ideal for Base Station or Test Equipment Apps

Frequency	10.0 MHz to 120.0 MHz				
Output	Sinewave, +10dBm min into 50 ohms				
Harmonics	-20dBc				
Temp Stability	Temp Range	10MHz Tol	Model	100MHz Tol	Model
	0 to +50°C	± 1x10 ⁻⁸	B18	± 5x10 ⁻⁸	B58
	-10 to +60°C	± 1.5x10 ⁻⁸	G158	± 7x10 ⁻⁸	G78
	-20 to +70°C	± 2x10 ⁻⁸	N28	± 1x10 ⁻⁷	N17
	-40 to +85°C	± 5x10 ⁻⁸	T58	± 3x10 ⁻⁷	T37
Freq vs. Supply	±5x10 ⁻⁹ for a 5% change				
Aging	±1x10 ⁻⁷ per year (10MHz); ±5x10 ⁻⁷ per year (100MHz)				
Input Voltage	+15 VDC Option C +12 VDC Option D				
Input Power	Turn-on - ≤ 6W for 5 minutes Idle - ≤ 2.5W @ +25°C				
Warm-up Time	within ± 5x10 ⁻⁸ in 5 minutes, ref to 60 minute frequency @ +25°C				
Phase Noise	10MHz Std	10MHz Ultra-Low	100MHz Std	100MHz Ultra-Low	
(Sine Max)	10 Hz	-125 dBc/Hz	-128 dBc/Hz	-85 dBc/Hz	-95 dBc/Hz
	100 Hz	-150	-155	-115	-125
	1 kHz	-160	-163	-145	-155
	10 kHz	-165	-168	-160	-165
	100 kHz	-165	-168	-165	-170
Frequency Adjust	±1.0 ppm typ, positive slope +0.5 to +5.0V EFC				
Shock (optional)	MIL-STD-202, Method 213, Condition C				
Vibration (optional)	MIL-STD-202, Method 204, Condition A				

Ordering Example:
YH1322 - N28 - D - UL - 10.0MHz
(Model# - Stability - Input V - Phase Noise Opt - Freq)

PIN CONNECTIONS

- 1 - EFC
- 2 - Input Voltage
- 3 - 0V, Case Gnd
- J1 - Output



To inquire about available custom parameters, please contact us at sales@greenrayindustries.com.

840 West Church Rd., Mechanicsburg, PA 17055

Tel: 717-766-0223 Fax: 717-790-9509

www.greenrayindustries.com email: sales@greenrayindustries.com